



Bringing SIP to the enterprise

Architecting The SIP Network

Today's Topics

- **Infrastructure**
- **Security**
- **Interoperability**
- **Quality and Reliability**

IP-PBX

ITSP

**PSTN
Gateway**

INFRASTRUCTURE

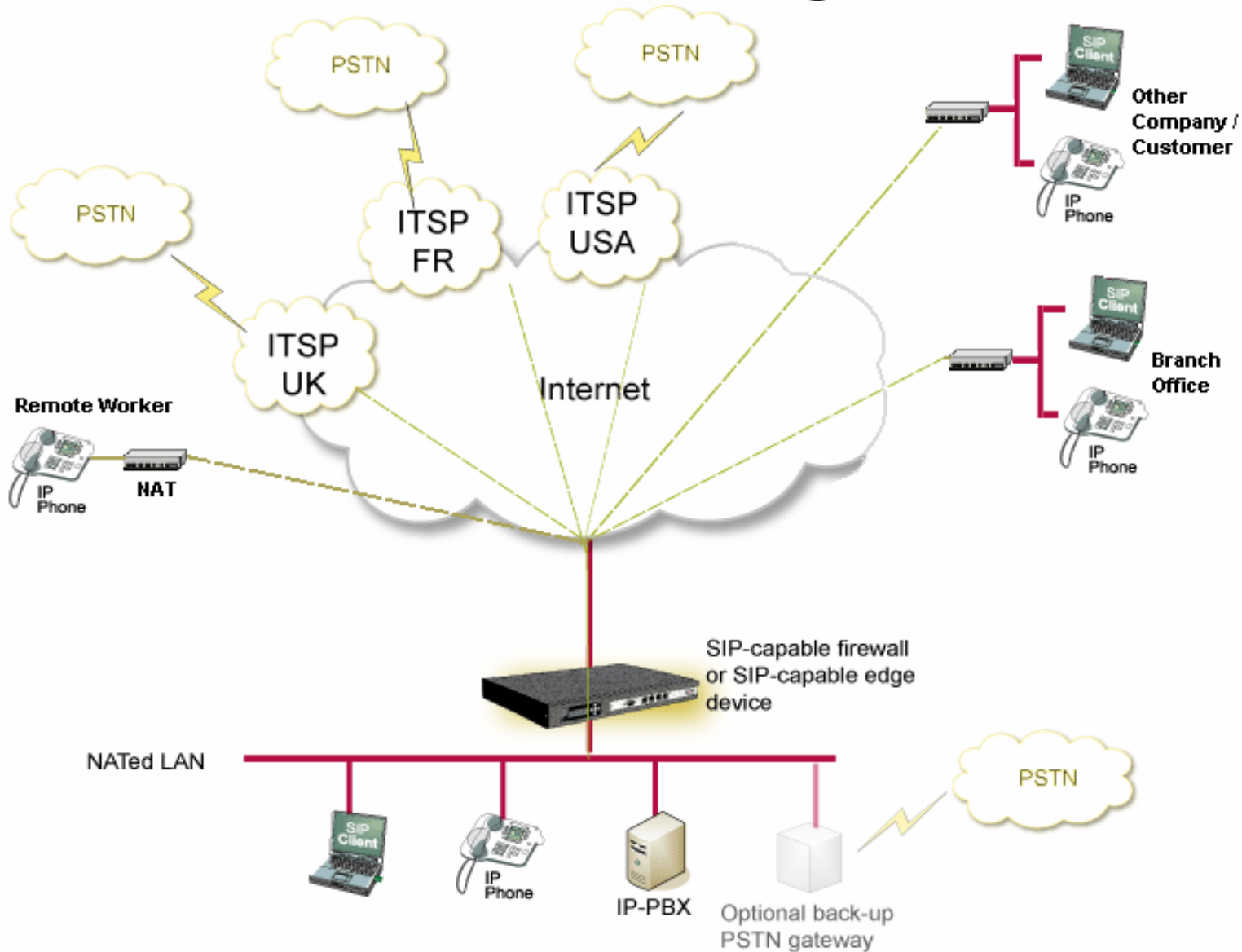
WHAT'S IN YOUR NETWORK?

**SIP
Trunking**

**SIP-Aware
Firewall**

**Remote
Phones**

Network Diagram



Infrastructure

- **VLANs?**
 - Limiting – No Rich Communication
 - No Soft Clients
- **Single Network!**
 - Realizing Full Converged Communications
 - QoS
- **Bandwidth Requirements**
 - LAN (Data, Voice)
 - WAN (Data, Voice)
 - Codec (G.711, G.729, others)

Infrastructure

- **Power**
 - UPS
 - PoE
- **Monitoring**

Infrastructure

IP-PBX Component

- Hybrid IP-PBX
- IP-PBX with SIP front end
- SIP Based IP-PBX

Things to Consider???

- Needed Functionality
- Connect Multi-Vendor Endpoints
- Manageability
- Integration with other IP-based Applications
- Remote Workers / Branch Offices
- Anonymous VoIP Callers (Other Systems)

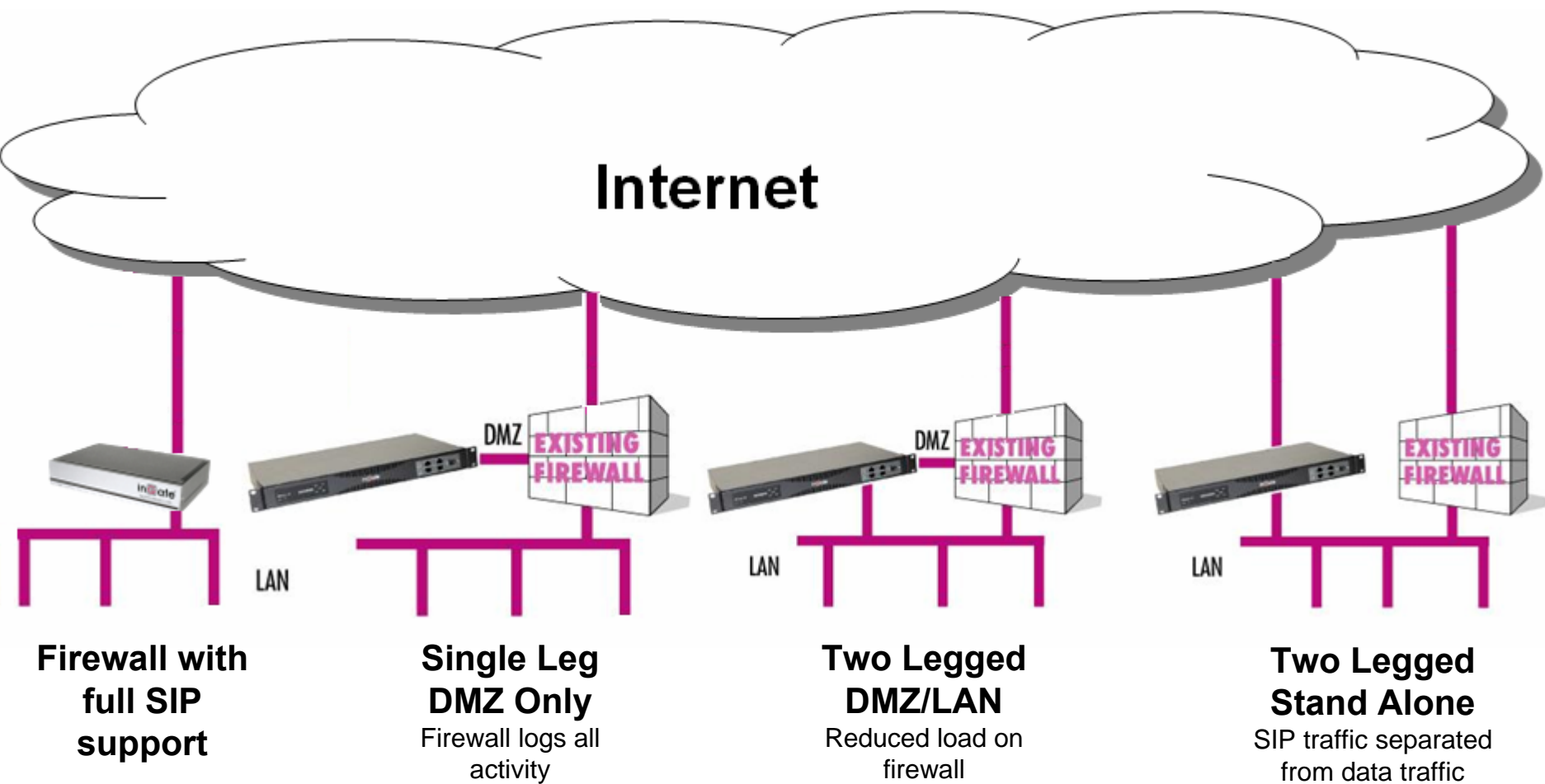
Infrastructure

- **Enterprise Edge Component**
 - FW
 - NAT
 - SIP Aware (SIP Proxy Based)

What can it do for me???

- Security
- Mediation between IP-PBX and ITSP
- Reliability / Survivability Features
- Enable Remote Workers
- Branch Office Interconnect

Deployment Flexibility



Infrastructure

- **Service Provider Component (ITSP)**
 - Facilities-based
 - Facilities-less
 - ISP w/ ITSP services

What can it do for me???

- PSTN Connectivity
- Local Breakout

Security

- **Threats**

- Brute Force
 - Denial of Service (DoS & DDos)
 - Malformed Message attacks
 - Buffer Overflow Attacks
 - Session Hijacking & Redirection
 - Voice Spam
 - Packet level intrusion
 - Vmail bombing
 - SIP Spam
- VoIP Security Alliance (VoIP-SA)

Security

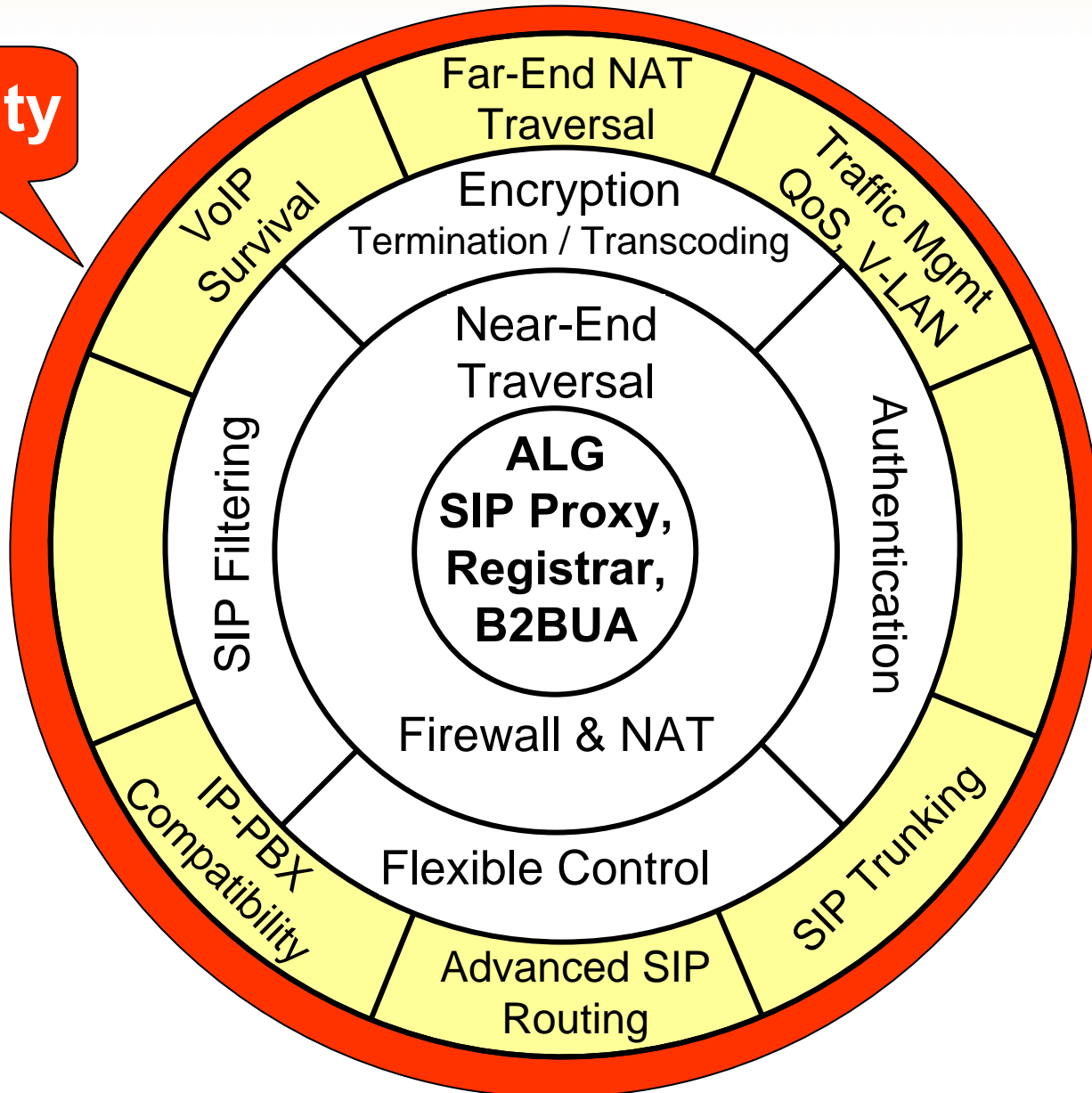
- **Stable Platform**
- **SIP Signaling**
 - SIP Parser
 - Optional Loop Detection
 - Authentication (DIGEST)
 - Encryption (TLS or MTLS)
 - Filtering (ex. Content type, method, To/From Header, black/white listing, etc.)

Security

- **Controlling Media**
 - Dynamic port control
 - More secure than STUN/TURN/ICE
 - Only accept media from endpoint that receives media (prevents media injection)
 - Media Encryption
 - SRTP

Edge – Needed Feature Set

Security



Interoperability

- **SIP Standards**
 - Defined by multiple IETF Standards
 - Different vendors focus on different specs.
 - Testing Important
- **SIPconnect** – Created by SIP Forum as a set of best practices for interfacing PBX with ITSP.
 - DNS
 - Signaling Security
 - FW/NAT Traversal
 - PSTN & SIP Addressing
 - Quality of Service
 - Handling of Media
 - Authentication
 - Accounting

Interoperability

- **Mediation**
 - IP-PBX to ITSP
 - Varied Authentication Requirements
 - Least Cost Routing
 - Call Transfer
 - Conferencing
 - Remote worker (behind SIP-unaware NAT)
 - ENUM

Quality & Reliability

- **Prioritization of Voice Traffic**
 - Services (protocol & port)
 - Packet size
 - SIP Traffic
 - IP address and segments
- Inbound and Outbound
- Dynamic bandwidth allocation
- Setting of Type of Service (TOS) and/or Diffserv bits

Quality & Reliability

- **Call Admission Control**
 - Emergency Calls
- **Other Voice Quality Factors**
 - PCs/Laptops
 - Fragmented disks
 - Poorly managed software installations
 - Sound card not optimized for voice
 - QoS on LAN
- **MPLS**
 - Voice only?

Quality & Reliability

- **Reliability of SIP Trunks**
 - UPS a must
 - TDM/PSTN gateway capacity as a backup?
- **Failover to Secondary ISP**
- **Failover to Secondary ITSP**
- **Failover to Secondary Edge Equipment**
 - Registrations and calls lost
 - Registrations maintained
 - Registrations and calls maintained



Bringing SIP to the Enterprise

Shane Cleckler
Mgr Systems Engineering

Mail & SIP: shane@ingate.com

Direct: 972-678-0464