

Ingate SIParator® 95

Ingate SIParator® 95 – The Secure Enterprise SBC

Adopting SIP is a simple process with the Ingate SIParator®, the secure enterprise session border controller (E-SBC). The SIParator makes secure SIP communications – including VoIP, SIP trunking and more – possible while working seamlessly with your existing network firewall. Harness the benefits of Unified Communications while maintaining current investments in security technology with Ingate's proven, cost-effective SIParator.

The Ingate SIParator® 95 is a high capacity, high performance enterprise session border controller (E-SBC) made for large enterprises and service providers. They provide a secure solution for bringing SIP into the network. Traditional firewalls block SIP communications; the SIParator works with existing SIP-unaware firewalls to allow and secure SIP traffic, while leaving your existing security infrastructure in place.

The SIParator 95 can handle up to 1,800 concurrent sessions, or simultaneous VoIP calls (RTP sessions), at any given time.

Ingate's award-winning SIParators are fully featured, supporting stateful inspection and packet filtering with rules defined and maintained by the network security administrator utilizing the GUI. Ingate SIParators include an encrypted Virtual Private Network (VPN) termination module. They boast complete SIP support; they also have a proxy for all standard protocols, including TCP, UDP, FTP and DHCP.



Trusted Network Security for VoIP

Ingate's SIP proxy architecture grants fully secure traversal of the SIP traffic. Ingate products support Transport Layer Security (TLS) for secure SIP signaling. They also support encrypted SRTP (Secure Realtime Transport Protocol), providing a high level of security for live data with advanced encryption, confidentiality, message authentication and replay protection. When combined, these protocols further shield users from eavesdroppers, hackers and spoofers.

Support for SIP Trunking

More and more Internet Telephony Service Providers (ITSPs) offer SIP trunks – a combined Internet and voice connection that delivers exceptional cost-savings and proven ROI in less than a year. Ingate SIParators,

with Ingate SIP Trunking software module, make secure SIP trunking possible by solving Network Address Translation (NAT) traversal, allowing the enterprise to connect to the SIP trunk. They also ease compatibility issues between the IP-PBX and ITSP, ensuring a quick and simple deployment.

Choose the Right Features for Your Network

Ingate's add-on software modules allow you to tailor the SIParator to meet the specific demands of your business:

- Ingate Remote SIP Connectivity allows remote and mobile workers to work from behind a NAT-ing device at home, a hotel or wireless hotspot and make and receive calls using the PBX located at the corporate headquarters.
- Ingate Enhanced Security provides Intrusion Detection and Intrusion Prevention for SIP, as well as encryption of the communication.
- VoIP Survival allows an enterprise using a CENTREX or hosted PBX solution to fail over to the Ingate, to enable internal calls and redirect outside calls to a local PSTN gateway.
- Quality of Service (QoS) ensures excellent voice quality by setting priorities and allocating bandwidth properly.

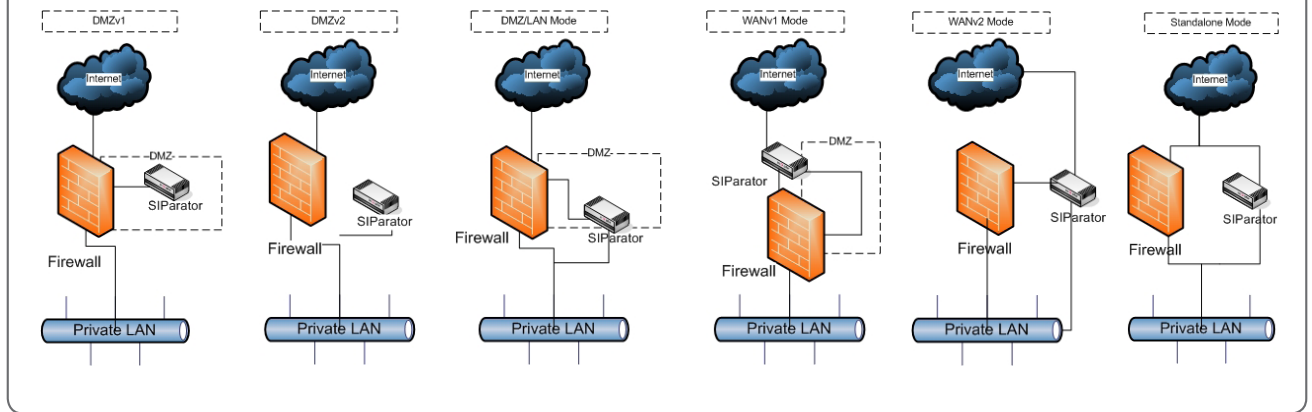
The Ingate Advantage

Ingate's standards-based solutions are interoperable with most major suppliers of SIP products, including 3Com, Audiocodes, Avaya, Cisco, Ericsson, Microsoft, Mitel, ShoreTel, snom, NEC, Sphere, Vegastream and many others. Ingate supports SIPconnect, allowing the enterprise to successfully connect to SIPconnect-compliant SIP trunking service providers quickly, easily and securely.

Why Ingate?

- For secure SIP trunks, secure VoIP, secure network
- SIP normalization: resolving interoperability issues between IP-PBX and ITSP, for simplified installations
- Secure NAT traversal
- Proven, reliable

Flexible deployment



Technical Specifications Ingate SIParator® 95

Feature	Ingate SIParator 19	Ingate SIParator 50	Ingate SIParator 55	Ingate SIParator 65	Ingate SIParator 95
Interfaces (10/100 Mbit/s)	3	0	0	0	0
Interfaces (10/100/1000 Mbit/s)	0	4	4	4	6
Redundant power supply	No	No	No	No	Yes
Type of disk	Flash	HD	HD	HD	RAID 1
Dimension WxDxH (mm)	228x146x44	430x369x44	430x369x44	430x369x44	772x426x43
Certifications	CE, FCC, UL	CE, FCC, UL	CE, FCC, UL	CE, FCC, UL	CE, FCC, UL
Management					
Automatic check for new releases	Yes	Yes	Yes	Yes	Yes
Configuration options: Web GUI (HTTP, HTTPS) and CLI (SSH, serial cable)	Yes	Yes	Yes	Yes	Yes
SNMP	Yes	Yes	Yes	Yes	Yes
Max numbers of VLANs	16	32	64	128	256
Internal log to HD	No	Yes	Yes	Yes	Yes
Logging to PCAP file	Yes	Yes	Yes	Yes	Yes
Syslog	Yes	Yes	Yes	Yes	Yes
E-mail events	Yes	Yes	Yes	Yes	Yes
External RADIUS server authentication for GUI and SIP	Yes	Yes	Yes	Yes	Yes
Support for multiple ISPs	Yes	Yes	Yes	Yes	Yes
Free software upgrades	First year	First year	First year	First year	First year
SIP Functionality					
SIP proxy	Yes	Yes	Yes	Yes	Yes
SIP registrar	Yes	Yes	Yes	Yes	Yes
SIP traffic to private IP addresses (NAT/PAT)	Yes	Yes	Yes	Yes	Yes
SIP Connection set up (SIP + RTP)	0.15 s	0.15 s	0.15 s	<0.15 s	<0.15 s
RTP data delay (10 Mbps/100 Mbps) network	0.19/0.08 ms	0.19/0.08 ms	0.19/0.08 ms	0.19/0.08 ms	0.19/0.08 ms
Number of concurrent voice RTP sessions (G.711)	40	150	300	650	1800
Concurrent encrypted voice RTP sessions (both SRTP and TLS)	20	75	150	330	900
Busy hour call attempt	36000	72000	79200	79200	234000
Billing and authentication of SIP users from an external RADIUS	Yes	Yes	Yes	Yes	Yes
SIPconnect compliance	Yes	Yes	Yes	Yes	Yes
Add-on modules					
SIP Trunking (connecting an IP-PBX to an ITSPs SIP-trunk)	Yes	Yes	Yes	Yes	Yes
Remote SIP Connectivity (Far-end NAT-passing incl STUN-server)	Yes	Yes	Yes	Yes	Yes
QoS (bandwidth limitation and prioritization)	Yes	Yes	Yes	Yes	Yes
Enhanced Security (IDS/IPS for SIP, SRTP and TLS)	Yes*	Yes	Yes	Yes	Yes
VoIP Survival (VoIP redundancy if Internet connection fails)	Yes	Yes	Yes	Yes	Yes
SIP Registrar (Ingate is used as the primary SIP registrar)	Yes	Yes	Yes	Yes	Yes

inGate